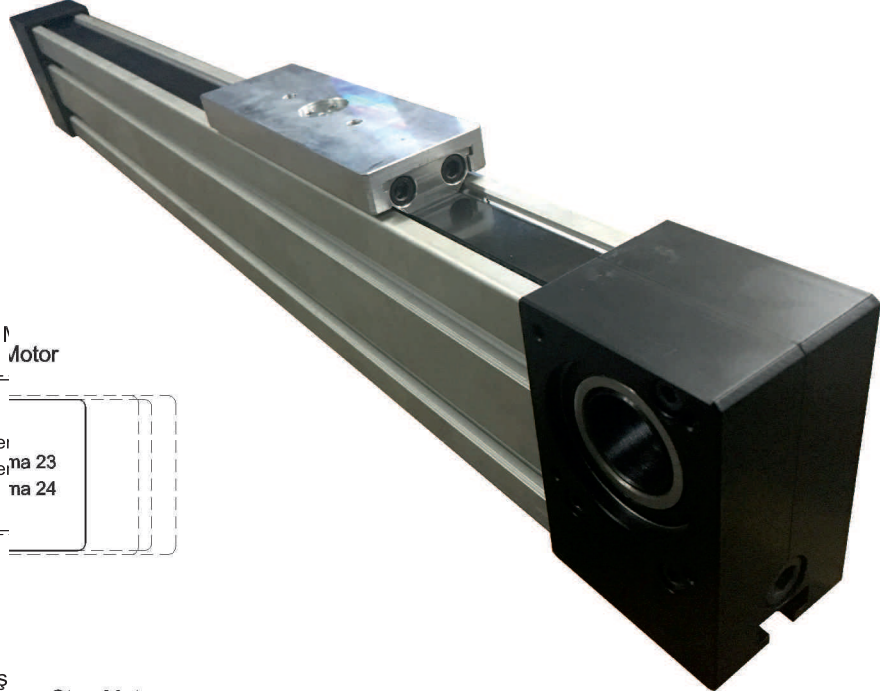
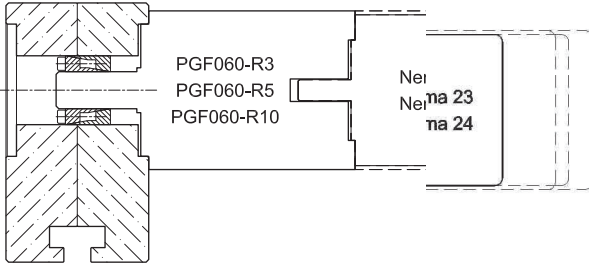


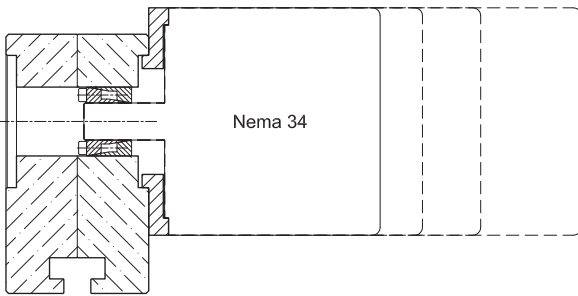
CG08-45x93 *Linear Modül (İçten Makaralı, Kayışlı)*



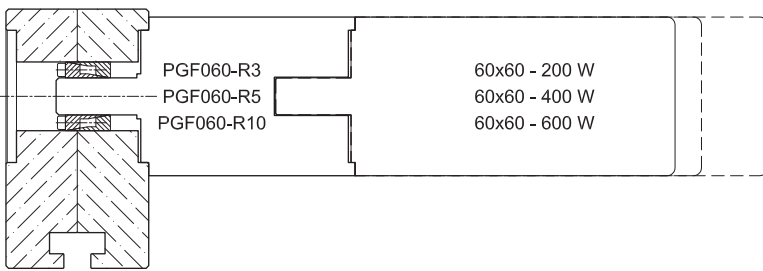
Konik Kilit + Planet Redüktör + Step Motor



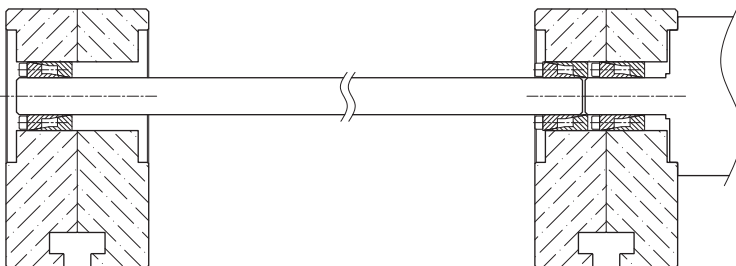
Konik Kilit + F50x73-10 Bağlantı Flanş



Konik Kilit + Planet Redüktör + Servo Motor



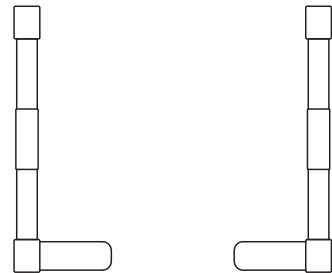
Konik Kilit + Ara Tahrik Mili (Ø14 mm) + Konik Kilit



Teknik Özellikleri

Diş Sayısı	30
Kayış Tipi	HTD 5M
Kayış Geniřlięi	20 mm
1 Turda Aldığı Yol	150 mm
Tekrarlama Hassasiyeti	0.1/300 mm
Maksimum Strok	5845 mm

Motor Bařlantı Yönleri



A

B

CG08-45x93 *Strok: 100 5845 mm*

