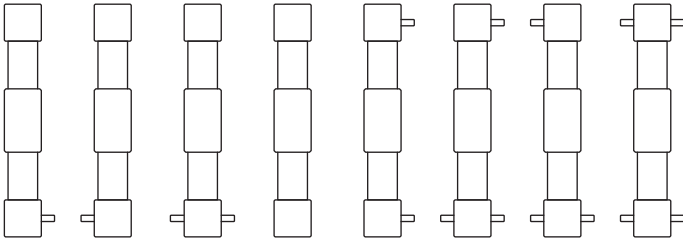


## KG15S-60x66 *Linear Modül (Lineer Kızaklı, Kayışlı)*



### Tahrik Mili Çıkış Yönleri

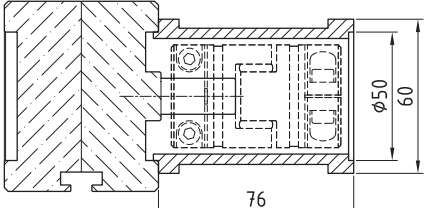


A B C D E F G H

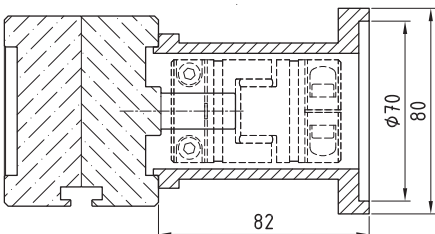
### Teknik Özellikleri

Diş Sayısı	32
Kayış Tipi	HTD 5M
Kayış Geniřlięi	25 mm
1 Turda Aldığı Yol	160 mm
Tekrarlama Hassasiyeti	0.1/300 mm
Maksimum Strok	5880 mm

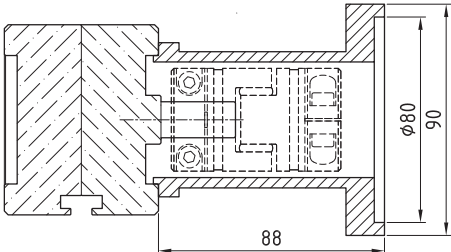
F50x50-76 Motor Flańşı + GS19 Kaplin + .....



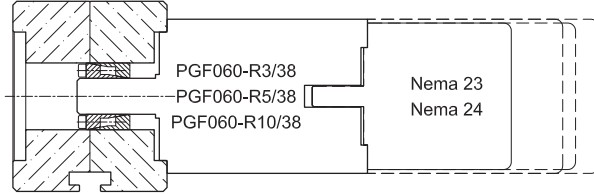
F50x70-82 Motor Flańşı + GS19 Kaplin + .....



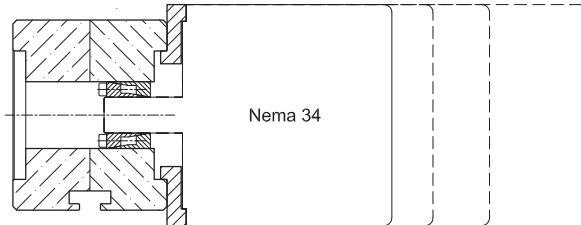
F50x80-88 Motor Flańşı + GS19 Kaplin + .....



Konik Kilit + Planet Redüktör + Step Motor



Konik Kilit + Baęlantı Flańşı + Step Motor



Konik Kilit + Planet Redüktör + Servo Motor

